

K.B. MUTSUMI

Prophylaxis Paste

PURETECT



Containing two kinds of inorganic particle (corpuscle of silicon nitride and porous silica particles), PURETECT is effective for cleaning and polishing at the same time after scaling. It brings shiny tooth surface without damaging tooth.



■ Net content: 40g

Polishing after scaling.

Removal of stains such as nicotine.

Polishing after orthodontic appliance attachment.

Polishing after breaching.

Polishing before cavity preparation.

Cleaning,
Polishing & Glazing.

**One Paste,
Three Works.**



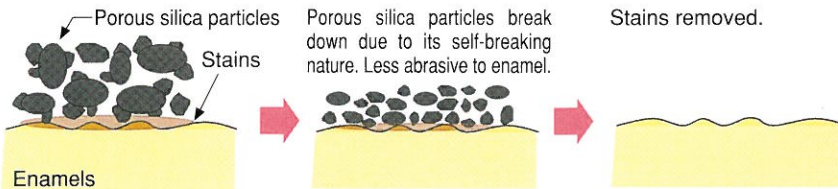
PURETECT

PURETECT, which contains two kinds of inorganic particles with different sizes, forms and hardness, is formulated to enable tooth surface cleaning and finish-polishing at one time. Moreover, a natural-product-derived glazing material is added to realise the natural shine.

One Paste, Three Works.

1 Cleaning

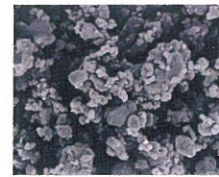
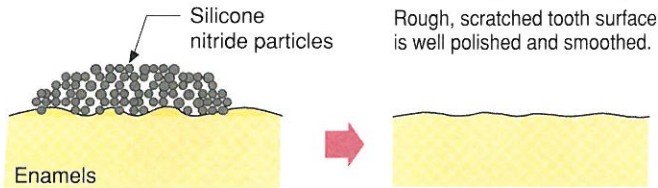
Porous silica particles with large dimension and low hardness removes stains.



<SEM photo 1>
Porous particles: X100
Average particle size: 25 μm approx.
Particle form: Porous, partly agglutinated.
Efficacy: Low hardness, cleans well.

2 Polishing

Silicone nitride particles of 1 μm size with high hardness smooth the tooth surface.



<SEM photo 2>
Silicone nitride particles: X1000
Average particle size: 1 μm approx.
Particle form: Round
Efficacy: High hardness, smooth the surface.

3 Glazing

Natural-product-derived glazing material makes the surface shiny.



Application example

1. Stain removal, polishing and glazing are available for all kinds of discoloured teeth except for calcified, with one paste.

2. Apply on prophy brush or prophy cup with a little excess to operate with low speed rotation. PURETECT can also be applied for metal prosthesis or resin surface with no damages.

Precaution Close the cap after every usage to prevent moisture loss.

Manufactured & Distributed by
MUTSUMI CHEMICAL INDUSTRIES CO., LTD.

8-9 Banko-cho, Yokkaichi, Mie, 510-0804 JAPAN

☎81-593-31-2354 ☎81-593-31-2856

<http://www.mutsumidental.com> ✉ mutsumi@cty-net.ne.jp